



**Lenox Instrument Company, Inc.**  
265 Andrews Road • Trevose, PA 19053  
USA 800-356-1104 • Worldwide 215-322-9990  
Fax 215-322-6126 • sales@lenoxinst.com

## *Tin Bath Periscope System*

***A durable and rugged, high-temperature remote viewing video camera system designed specifically for the float glass process***



Backed by over eighty years of experience, the **Lenox Tin Bath Periscope System** is designed to provide real time, high-resolution images in the tin bath environment. A specially designed and proven water-jacketed lens assembly enables operation in this hostile environment.

Join float glass manufacturers like AFG, Cardinal, Pilkington, and PPG that are using the **Lenox Tin Bath Periscope System** to monitor and record the amount of trim being produced, wheel depth and tracking, and the functioning of the automated drive system (top knurl wheels) - helping to reduce scrap by insuring ribbon integrity and improving overall process efficiency.

**Standard System includes:**

Specifications are subject to change without notice

**Lens system and water jacket**

- 2.5" O.D. by 10' - 6" working length & right angle direction of view
- 30-degree field of view
- Installed temperature sensor to monitor temperature at the lens objective
- High flow water shroud with mounting flange and nitrogen purge

**Camera Housing**

- Rugged protective enclosure provides interface with water jacket
- Camera mounting assembly with slide plate for focusing
- Video, electrical and temperature sensor output connections

**CCD black & white camera**

- 570- line horizontal resolution for maximum contrast and resolution

**Optional Accessories:**

**Monorail insertion / retraction assembly**

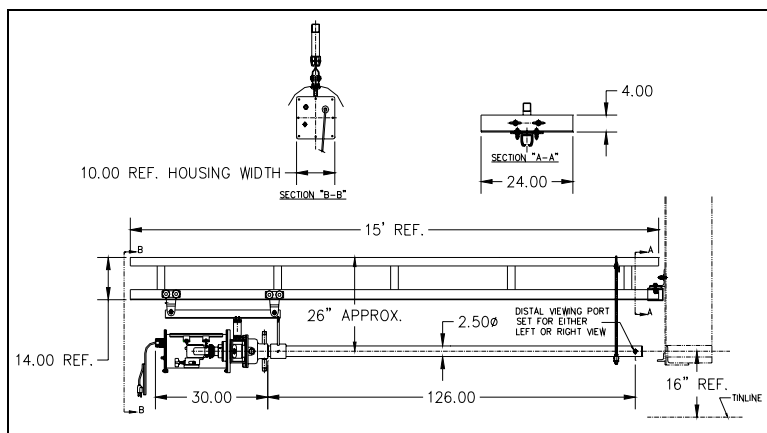
- Manually operated – wall mountable with ceiling supports

**CCD color camera with 480-line horizontal resolution**

**Black & white and color 12", 17" and 20" monitors**

**Video / Digital image recording to capture and store images for documentation**

**Monorail Insertion / Retraction Assembly**

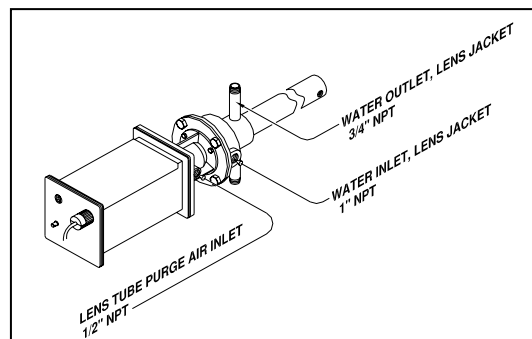


The optional monorail assembly includes a reinforced monorail track for mounting to the tin bath. The periscope is coupled to a trolley assembly by way of two mounting sleeves.

**Periscope Water and Air Connections**

**Lens cooling / purging requirements:**

Instrument quality with flow rate of 3 SCFM



**Water-cooling requirements:**

Water pressure rates of 20 – 30 PSIG provides flow rates of 25 – 32.5 GPM