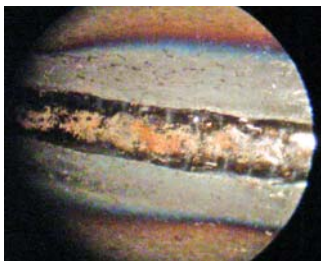
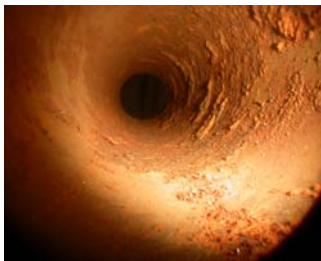




**Lenox Instrument Company, Inc.**  
265 Andrews Road • Treviso, PA 19053  
USA 800-356-1104 • Worldwide 215-322-9990  
Fax 215-322-6126 • sales@lenoxinst.com

## *Portable Videoscope System*

An easy to use, self-contained, portable, remote imaging system for inspections up to 98 feet



### **Applications**

Bridge Inspection  
Boiler Tube Inspection  
Airframes  
Power Generation Equipment

Process Tanks and Vessels  
Remote Visual Inspection (RVI)  
Tubing and Pipe Inspection  
Heat Exchangers & Process Lines

Hydraulic Cylinders  
Covert Inspection  
Borescope Inspection  
Drill Pipe Inspection

### **Color CCD Camera Heads - Bright LED Lighting**

1" (26 mm) diameter camera that is waterproof up to 100 ft (30 m). Camera head has a 120° FOV and can easily be pushed through bends of 90° in pipes as small as 1.6" (40 mm) diameter. 1.5" (40 mm) diameter camera, waterproof up to 3.2 ft (1 m), that tilts 180° from left to right and pans through 360°. A transmitter is built into each camera head and can be located wirelessly by optional PVS Locator Unit. Twelve bright white LED lights surround each camera head.

### **Flexible Push Rod Cable - Electronic Distance Measurement**

98 ft (30 m) fiber-glass reinforced, push rod cable for negotiating 90° bends. Cable is retractable and coiled for storage inside the system's rugged carrying case. Length of push rod distance sensed electronically and displayed on-screen for pinpointing problems. Camera head position and angle are constantly displayed on monitor.

### **Color Monitor - Keypad Operation - Digital Recording - Cordless Operation**

Tilttable, 7" TFT color monitor with 6.6 ft (2 m) length cable for removal out of case provides sharp picture quality. Built-in digital recording onto removable 2GB memory card (32GB max) allows you to save and replay the inspection. A mini USB port for video file transfer to a computer for viewing with included software. Additional RCA video output. Keypad operation with menu guidance and camera movement control. Space to store two - 12V rechargeable batteries each with 2 hours of cordless operation. Main battery charged in the case.

### **Accessories**

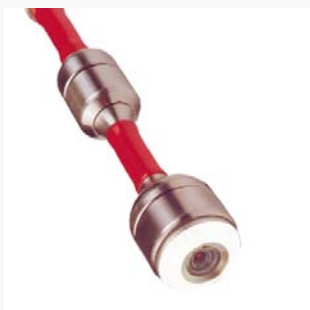
Camera roller guide and protection sleeve that protects and improves the ability of the camera head to take bends. PVS Locator Unit for wireless location of the radio signal transmitted by camera head.

**Portable Videoscope Systems:**

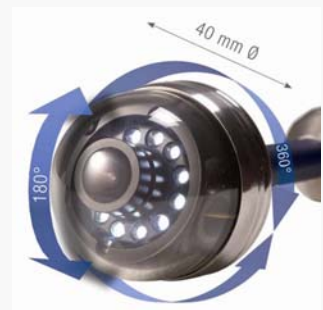
Stock Number	Camera Head Diameter	Camera Head / System Specifications	Length
	mm (inches)		m (feet)
7PVS-250	(Miniature Head) 26 mm (1.024 inch)	Fixed Head - 120° direct FOV - IP68, waterproof to 98.4 ft (30 m)- Digital, on-screen display of push rod distance measurement and position and angle display - built-in recording onto 2GB memory card (32GB max) - mini USB port for file transfer to computer - viewer software - 7" TFT color monitor - 1 rechargeable 12V battery	30 m (98.4 feet)
7PVS-350	(Pan / Tilttable Head) 40 mm (1.575 inch) (2.4 inch long)	Removable Head - 360° pan / 180° tiltable - IP67, waterproof to 3.2 ft (1 m) - Digital, on-screen display of push rod distance measurement and position and angle display - built-in recording onto 2GB memory card (32GB max) - mini USB port for file transfer to computer - viewer software - 7" TFT color monitor - 2 rechargeable 12V batteries	30 m (98.4 feet)
7PVS-350P	(Miniature Head) 26 mm (1.024 inch) (1.5 inch long) and (Pan / Tilttable Head) 40 mm (1.575 inch) (2.4 inch long)	2 Removable Heads - 360° pan / 180° tiltable - IP67, waterproof to 3.2 ft (1 m) and 120° direct FOV - IP68, waterproof to 98.4 ft (30 m) - Digital, on-screen display of push rod distance measurement and position and angle display - built-in recording onto 2GB memory card (32GB max) - mini USB port for file transfer to computer - viewer software - 7" TFT color monitor - 2 rechargeable 12V batteries	30 m 98.4 feet)

**Optional Accessories**

Stock Number	Description
7PVS-3847	Protection Sleeve - Protects 1" camera head and improves ability to maneuver bends
7PVS-3634	Stabilization Ball - To stabilize the flexible joint of the 1" camera head
7PVS-3682	Protection Sleeve - Protects 1.5" pan / tilttable camera head and improves ability to maneuver bends
7PVS-3681	Camera Roller Guide - Attaches to 1.5" pan / tilttable camera head
7PVS-7430	PVSK Locator Unit - wirelessly locates radio signal transmitted by camera head



Waterproof, 26 mm diameter, color, miniature camera head with LED lighting



Waterproof, 40 mm diameter, color, pan / tilttable camera head with LED lighting and replaceable dome